

# Embracing A Modern Approach to Work

## Overview

The way we work is changing. By 2025, it's estimated that 22% of the workforce (about 36.2 million American workers) will work remotely. To remain competitive, businesses must embrace digital transformation. This means identifying and migrating network infrastructure, databases, and business applications to private and public clouds which results in a whole new way to work. More productive employees, working from anywhere, keeping your business agile, flexible, and responsive to the markets. This can be called work modernization. And although there are challenges to modernizing the way you work, the benefits far outweigh the obstacles.

### COMPARISON

#### The Old Way to Work Versus the Modern Way

In the old way, workers were shackled to a desk and physical office because that's how they accessed the software and network resources needed to do their jobs. In the modern way, as businesses have migrated to cloud technologies, workers can be anywhere, able to access software and network services through secured browsers and mobile devices.

# What's Driving the Need to Modernize How You Work?



## Employing the Best Talent

Where talent used to be concentrated in urban centers, it's now distributed around the globe. For businesses to get the best talent, they need to enable employees to work where they are, and to do that, they need tools and systems accessible from anywhere.



## Improving Collaboration

At the heart of a modern way to work is collaboration which is provided through powerful, distributed cloud platforms, like Microsoft 365, which can enable ways to work better and more efficiently together.



## Expanding Into New Geographies

Buying or renting new office space can be expensive. But with a modern work strategy, you can enter new geographies or markets by supporting remote workers who can access your cloud-based business systems through any device.



## Increasing Business Agility

A modern approach to work leverages cloud-based technologies which are built on interoperable and industry-standard languages. This allows for rapid development and deployment of new applications, features, and even innovations.

## BENEFITS

# How Does a Modern Work Approach Benefit My Business?

At the heart of this approach is a digital transformation that migrates incumbent on-premises equipment and software to the cloud. This creates new opportunities for employees to collaborate better, be more productive, and improve the agility of your business. Here's a look at some of the benefits you'll experience with a modern work approach.

-  **Scalable Compute Resources**  
Public and private cloud platforms offer scalability to expand compute infrastructure according to need without the hassle of upgrading or adding physical servers.
-  **Improved Security, Compliance, and Governance**  
Protecting your network infrastructure, databases, and systems is enhanced through cloud providers who add extra layers of security and monitor it 24/7/365.
-  **Productivity Enhancements**  
The open and extensible nature of cloud-based technologies allows you to build new, optimized workflows while more easily integrating innovative technologies like AI and ML.
-  **More Efficient Work**  
Business tools and systems in the cloud are often built with intuitive interfaces, seamless interactions, and accessibility across diverse platforms and devices, including non-company-owned devices, ensuring flexibility, and productivity.
-  **Remote Work Environments**  
With cloud-based software and systems accessible through a variety of devices, you can now support employees to work from anywhere, enhancing geographic reach without the costs of securing a physical location.

# Key Components of a Modern Work Approach

To navigate the transition to a modern work approach, IT leaders must be willing to embrace cloud modernization. They must carefully select cloud-based technologies, from network infrastructure to business software, that align with their organization's needs. Adopting and implementing these technologies requires a strategic and thoughtful approach to reduce risk and optimize benefits. In this ever-changing and challenging environment, the primary objective is to safeguard both employees and critical data, ensuring that companies not only maintain their operational integrity but also excel in the competitive world of modern work. These are some of the core components of a modern work approach.

## Cloud Infrastructure and Data

At the heart of a modern work approach are the cloud technologies that make remote work, business process optimization, and improved user experiences even possible.

### Networking

The network no longer needs to be a physical thing. With Network functions virtualization and Software-Defined Networking, on-premises servers can be virtualized. Authentication can take place in the cloud and VPNs can ensure secure connections regardless of employee location.

### Access

When business can be accomplished through distributed systems, like your network components and applications, work can happen from anywhere and on any device because your employees can access what they need where they are.

### Data and Databases

Data is the heart of the modern, digital business. But when it's trapped in on-premises servers, it can restrict where and when employees can work. Migrating critical data into the cloud can ensure business continuity (through reliable backups), improve security, and support anywhere, anytime access.

## Business Systems and Apps

The increased computational density in high-density colocation facilities necessitates robust power and cooling systems to ensure uninterrupted operation and longevity of the hardware.

### Optimized Workflows

When your systems and applications are distributed across your cloud infrastructure, you can create new, optimized workflows enabled by the interoperable nature of cloud technology. This can involve removing redundant or outdated systems and even replacing software with cloud versions.

### Better Application Management

With containerized applications deployed using tools like Kubernetes or Docker and automated with technology such as Terraform, managing the performance and availability of mission-critical software is easier. This can save time, effort, and even IT resources.

### Policies

Modern work, because it relies on more open technologies like the cloud, enables businesses to fine-tune and implement comprehensive policies about data, access, and security. This ensures that even while distributed, applications and data are secured.

### Security

Along with your system-level cybersecurity, by modernizing the way you work with cloud technologies and distribution, you'll gain additional security through your cloud providers. 24/7/365, they will be protecting your infrastructure and applications from bad actors.

## Policies

Modern work, because it relies on more open technologies like the cloud, enables businesses to fine-tune and implement comprehensive policies about data, access, and security. This ensures that even while distributed, applications and data are secured.

### Security

Along with your system-level cybersecurity, by modernizing the way you work with cloud technologies and distribution, you'll gain additional security through your cloud providers. 24/7/365, they will be protecting your infrastructure and applications from bad actors.

### Compliance and Governance

When you move data off on-premises equipment and into the cloud, there are a host of new considerations such as where the data can be stored, how long it can be saved, and who can access it. Cloud platforms include tools to help you manage data and ensure compliance with local and federal laws.

---

As the modern workplace evolves, traditional network security is no longer sufficient. This has led to a surge in demand for Zero-Trust security solutions, which prioritize strict access controls regardless of a user's location or network connection. Modern Zero Trust security solutions leverage technologies such as Extended detection and response (XDR) and integrate:

- Identity Endpoint Detection and Response (EDR)
  - Cloud Application Security Broker (CASB)
  - Security Information & Event Management (SIEM)
  - Security Orchestration Automation & Response (SOAR)
  - Advanced behavior analytics
  - Artificial intelligence
  - Device/Policy Management
  - Data Classification
  - Secure Access Service Edge (SASE)
  - Air-gapping and immutability for backup and recovery
-

# How to Overcome Modern Work Challenges



## Security Challenges

To effectively address security challenges in today's dynamic work environment, organizations are increasingly turning to Zero-Trust security solutions. These solutions prioritize stringent access controls and integrate cutting-edge technologies to deliver comprehensive protection. By implementing advanced security components such as identity and endpoint management, behavioral analytics, and artificial intelligence, organizations can establish robust security frameworks that adapt to the evolving demands of the modern workplace. This holistic approach ensures the safeguarding of data and systems against emerging threats, irrespective of the user's location or network connection.



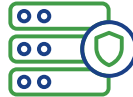
## Data Migration Challenges

Addressing data migration challenges in the modern work environment requires a strategic approach. Key elements include comprehensive planning, robust data classification, prioritization of data security, and leveraging automation to facilitate a seamless transition. Begin by thoroughly assessing dependencies and establishing clear migration paths to ensure all data relationships and integrations are accounted for. Conducting rigorous testing throughout the migration process is essential to identify and resolve potential issues early, thereby minimizing disruptions. Additionally, providing robust support and training for users can help ensure a smooth transition and maintain productivity.



## Remote Work Challenges

Organizations are implementing advanced capabilities to overcome remote work challenges. Capabilities include enhanced remote support, collaboration tools, cloud innovations, robust security measures, and AI-driven automation. These advancements ensure secure, seamless remote work environments, improve productivity, and address the constantly changing cybersecurity threats.



## Data Governance Challenges

In the modern work environment, organizations are addressing data governance challenges by implementing robust frameworks and leveraging advanced technologies. This approach includes comprehensive data classification, stringent access controls, automated compliance monitoring, and the use of AI for real-time analysis and reporting. By integrating these measures, organizations can ensure data integrity, meet regulatory requirements, and mitigate risks effectively.

Comprehensive data classification helps in identifying and categorizing sensitive information, enabling tailored security measures and compliance with data protection regulations. Stringent access controls ensure that only authorized personnel can access sensitive data, reducing the risk of unauthorized access and data breaches. Automated compliance monitoring streamlines the process of adhering to regulatory standards, providing continuous oversight and reducing the burden on human resources. AI-driven real-time analysis and reporting enhance the ability to detect and respond to potential threats swiftly, ensuring that data governance practices remain proactive and adaptive to emerging risks.



## Cloud Modernization Challenges

Overcoming cloud modernization challenges in the modern work environment requires an approach that includes assessing infrastructure, setting clear goals, and developing a migration strategy. Businesses also want to focus on security, optimize performance, provide user training, and implement monitoring for continuous improvement. This approach delivers an efficient cloud-based environment while maintaining data security and compliance.

# Why TierPoint Stands Out

Whether your organization is looking for understanding metrics or improving existing Modern Work solutions, seeking assistance from an operational perspective, or has a need to explore new solutions, TierPoint provides comprehensive services to support your needs aligned with a Modern Work Framework. This framework provides clear, actionable guidance and resources to develop a roadmap that embraces a modern work environment.

## Assessment

TierPoint Solution Engineers will conduct a comprehensive evaluation of your environment's current adoption status, focusing on infrastructure, operations, productivity & collaboration, security, compliance, automation, organization, and governance to tailor the cloud environment to your specific requirements.

## Strategy

Once the assessment has been carried out, TierPoint consultants will develop a comprehensive strategy for evolving your environment, incorporating discovery analysis, conceptual design, and an adoption roadmap. This strategy outlines the scope and approach, emphasizes risk management, and provides a succinct summary of the overall strategic direction.

## Adoption

With your strategy and IT resources fully defined, TierPoint engineers will help you implement and deploy your technology, and operational process, to the cloud. Our experienced engineers can also help you in adopting AI tools like Copilot by offering setup guidance, security risk monitoring, user training, policy development, audits, and incident response planning throughout your adoption journey. During this stage of the framework, we focus on maximizing the value of our engagement by ensuring projects stay on track, within scope, and on schedule. Leveraging our proven methodology, our delivery management resources organize teams, manage dependencies, track activities, mitigate risks, and guide execution. This approach emphasizes delivering tangible business value, effectively anticipating and managing change, fostering clear communication, and driving efficiency through innovation and experience. By defining and progressing a shared vision and employing risk-averse planning strategies, TierPoint enables successful project outcomes and client satisfaction.

## Operations

Finally, with your network components, software, and processes distributed across your cloud environments, TierPoint can help you manage and support that environment while continually looking for ways to optimize your modern work approach.

## USE CASES

### What Types of Businesses Benefit from Embracing Modern Work?

TierPoint provides tailored solutions to meet the demands of modern work environments. From assessments to strategic planning and seamless adoption, TierPoint Consulting offers expert guidance and innovative solutions. With a focus on maximizing value, ensuring security, and enhancing productivity, TierPoint empowers organizations to thrive in today's dynamic work landscape.

#### Technology & IT Services

Businesses in this tech sector, like software development, IT consulting, and other tech-related services, often have employees working around the globe who need access to corporate software and network resources.

#### Manufacturing & Engineering

These firms often employ complex software and processes to develop designs and schematics. By deploying these to the cloud, they can increase collaboration both within their own teams and with clients.

#### Consulting & Client Services

Employees of these firms are often in the field, working with clients, and collaborating with people all around the world. They need access to network resources, like shared files, as well as software to track project progress and work in shared environments.

#### Online & Web Technology

Many B2B and B2C web companies have employees working around the world. They need a distributed way to ensure collaboration, especially amongst developers, designers, and operations engineers.

## SUMMARY

# Top Benefits of our Modern Work Solutions

Improve how your business competes by adopting a Modern Work approach. Using our Modern Work Framework, TierPoint consultants can help you migrate network infrastructure, business software, data governance and security policies, and even help you deploy innovative services such as AI. Our suite of Microsoft 365 solutions caters to every aspect of your organization's operational needs. Contact us today.



### ✓ Enhanced Workforce Security

We offer development of security controls and policies for your organization, standard security baselines that can be applied to your environment to ensure user identity and access to company data is configured appropriately, and a log analytics solution to proactively monitor all aspects of your Microsoft 365 environment. Additionally, we provide 24/7 access to experts to guide you through the complex world of Microsoft security and management, efficiently filling any resource gaps with expertise and staffing.

### ✓ Data Protection and Disaster Recovery

TierPoint's Backup and Recovery for Microsoft 365 powered by Metallic delivers powerful, enterprise-grade data protection and recovery services against ransomware, accidental deletion, and data corruption for the full suite of Microsoft 365 applications. This service fills the gap left by Microsoft, which only protects the underlying infrastructure, with our service that is backed by SLAs, making TierPoint the single source for both Microsoft 365 and backup and recovery services.

### ✓ Top-Tier Support

Enjoy uninterrupted Day 2 support, ongoing management, and help desk support for Microsoft 365 with our 24x7 certified expert support based in the US, allowing you to focus on boosting productivity without the need to hire internal staff with expertise for troubleshooting issues or managing administrative tasks.

“ Partnering with TierPoint helped us unlock the full potential of all that Microsoft Modern Workplace has to offer. We've been able to streamline and automate business processes across our organization, leading to both cost savings and increased productivity.

Merek Chase Director of Infrastructure, Vallen Distribution, Inc.

## About TierPoint

TierPoint (tierpoint.com) is a leading provider of secure, connected IT platform solutions that power the digital transformation of thousands of clients, from the public to private sectors, from small businesses to Fortune 500 enterprises. Taking an agnostic approach to helping clients achieve their most pressing business objectives, TierPoint is a champion for untangling the complexity of hybrid, multi-platform approaches to IT infrastructure, drawing on a comprehensive portfolio of services, from public to multitenant and private cloud, from colocation to disaster recovery, security, and more. TierPoint also has one of the largest and most geographically diversified U.S. footprints, with dozens of world-class, cloud-ready data centers in 20 markets, connected by a coast-to-coast network.



## Learn More

Call 844.267.3687 or email [sales@tierpoint.com](mailto:sales@tierpoint.com) to connect with one of our advisors. Or visit us at [tierpoint.com](https://www.tierpoint.com) to learn more.